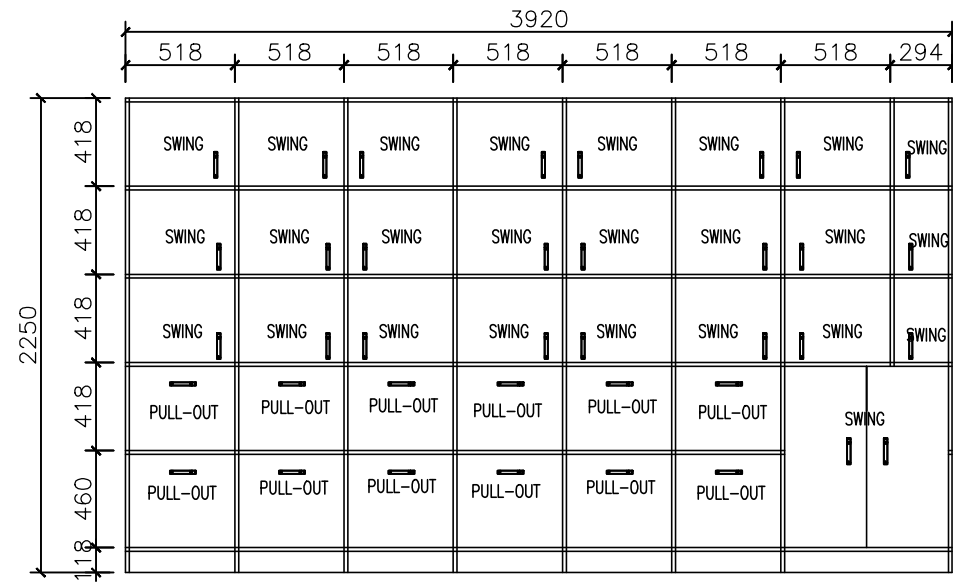


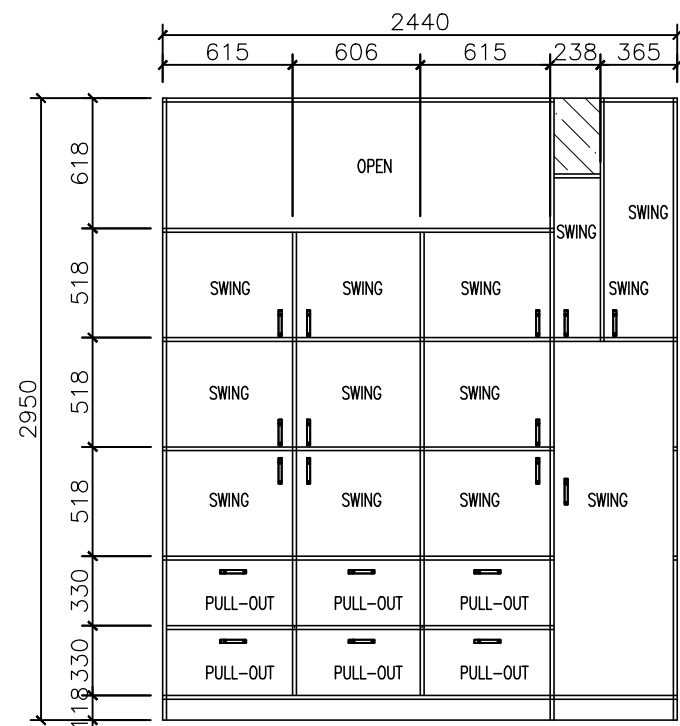
**CABINET 1- (1)**

SWING DOOR CABINET  
LAMINATE ON 18MM PHENOLIC BOARD  
COMPLETE WITH LOCKSET, PIANO HINGE AND HANDLE



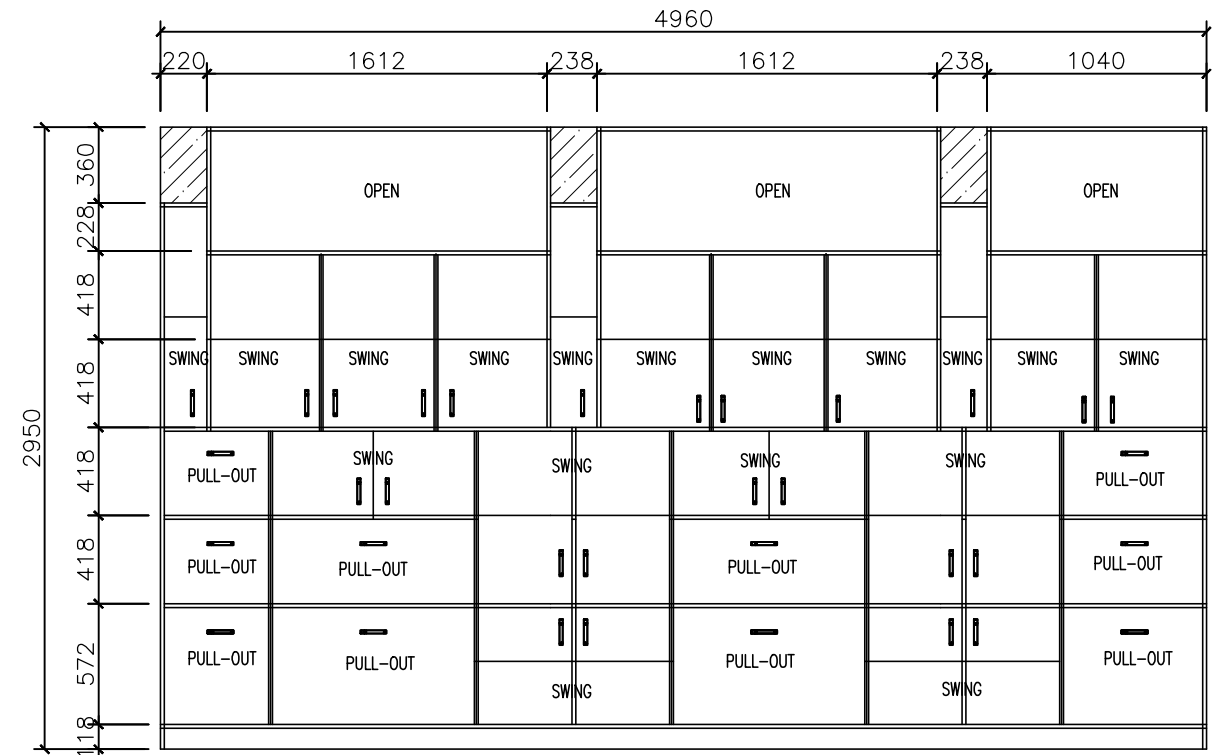
**CABINET 2 - (2)**

SWING & PULL-OUT DOOR CABINET  
LAMINATE ON 18MM PHENOLIC BOARD  
COMPLETE WITH LOCKSET, PIANO HINGE AND HANDLE



**CABINET 4 - (1)**

SWING DOOR CABINET  
LAMINATE ON 18MM PHENOLIC BOARD  
COMPLETE WITH LOCKSET, PIANO HINGE AND HANDLE



**CABINET 3 - (1)**

SWING DOOR CABINET  
18MM PHENOLIC BOARD  
COMPLETE WITH LOCKSET, PIANO HINGE AND HANDLE

PROJECT TITLE	SHEET NO.	DRAWN BY:	CHECK BY	VERIFIED BY	NOTED BY	RECOMMENDING APPROVAL	APPROVED BY:
REDEVELOPMENT OF AC ROOM TO STORAGE ROOM	<b>A-3</b>	LALAIN BLANCO JO	ROMEO M. PELAGIO OIC, INFRA UNIT, ETSD	JESSIE B. ARCE CHIEF, MEIES, ETSD	EDWIN MANRESA OIC, ETSD	CATALINO L. DAVIS DA, AES	DR. VICENTE B. MALANO ADMINISTRATOR
THIRD FLOOR PAGASA, WFFC COMPOUND, AGHAM RD., DILIMAN, QUEZON CITY							